

32L/14R 13497' x 200'
323° and 143°

32R/14L 13500' x 200'
323° and 143°

Preferred Takeoff

RW 14R and RW 32R

Preferred Recovery and Instrument

RW 14L and RW 32L

Normal Pattern

RW 14L LEFT

RW 14R RIGHT

RW 32L LEFT

RW 32R RIGHT

Note: All FLCP recoveries are LEFT pattern

IFOLS/FCLP available on:

RW 32L

RW 32R

RW 14L

Field Elevation: 232' MSL

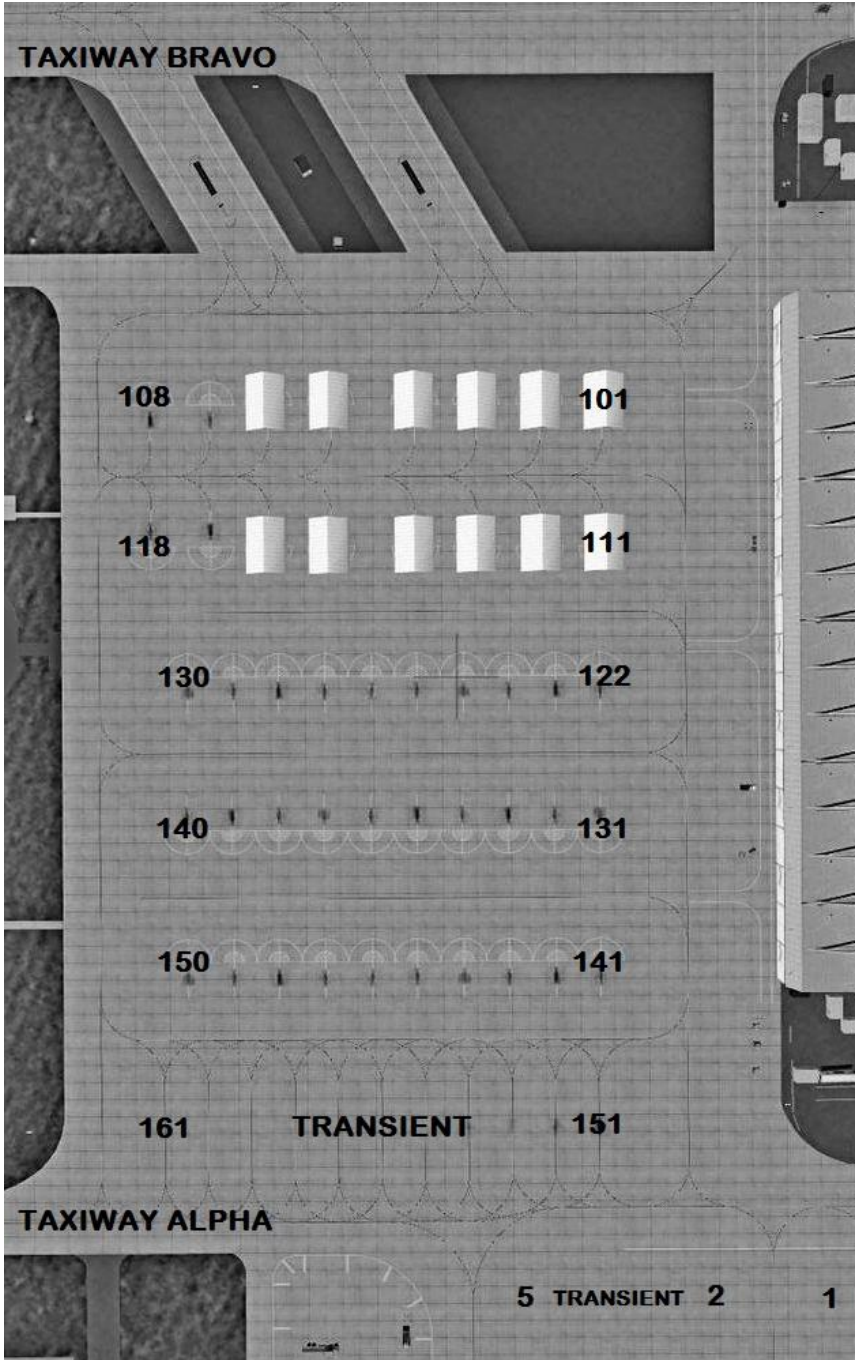
Pattern Altitude: 800' MSL (600' AGL)

Break Altitude: 1300' MSL (1100' AGL)

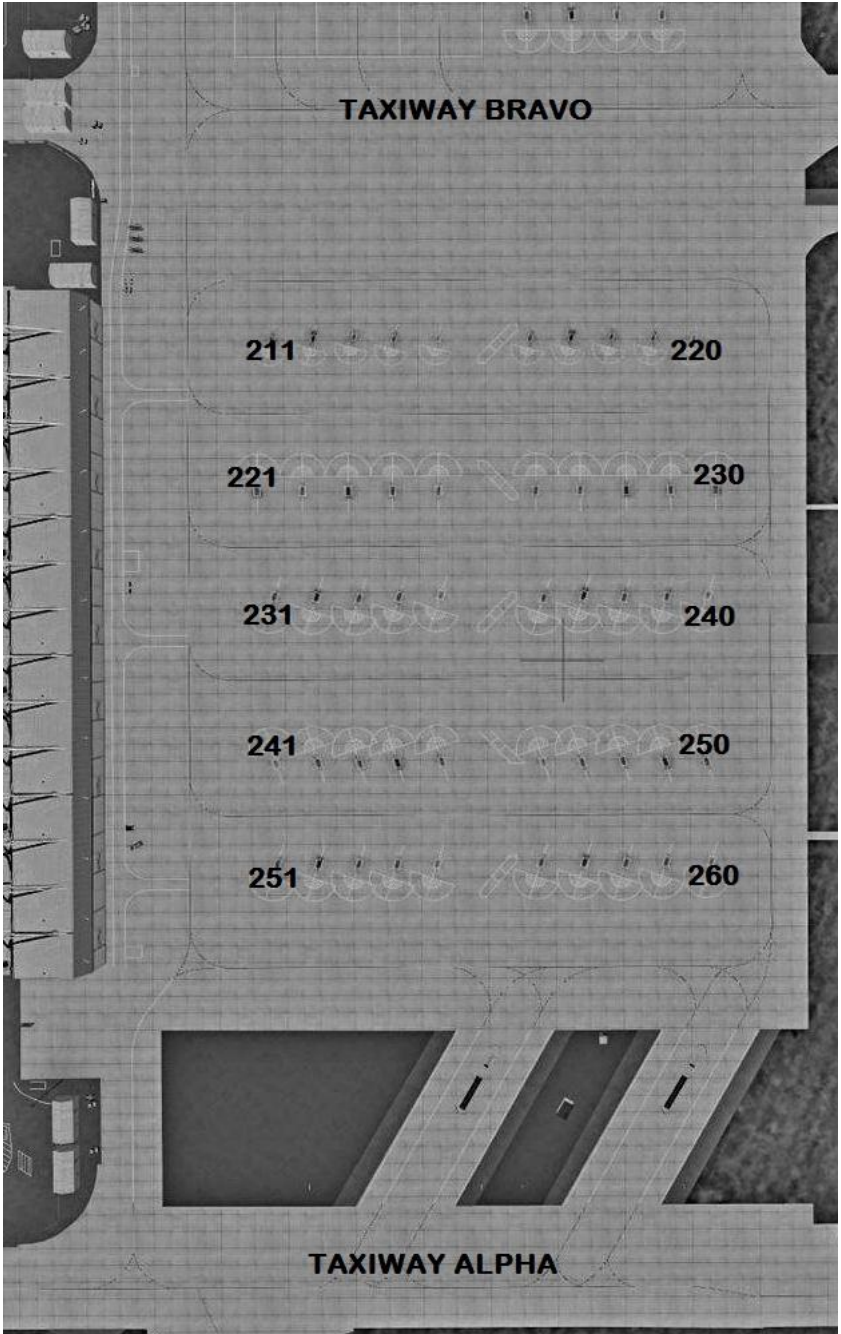
Delta Pattern: 1500' MSL (1300' AGL)

Freq	Type	Name
121.575	ATIS	KNLC
124.100	Clearance	LEMOORE
121.650	Ground	LEMOORE
128.300	Tower	LEMOORE LEFT
118.150	Departure	DEPARTURE 14
124.100	Departure	DEPARTURE 32
125.900	Approach	APPROACH NORTH
118.150	Approach	APPROACH SOUTH

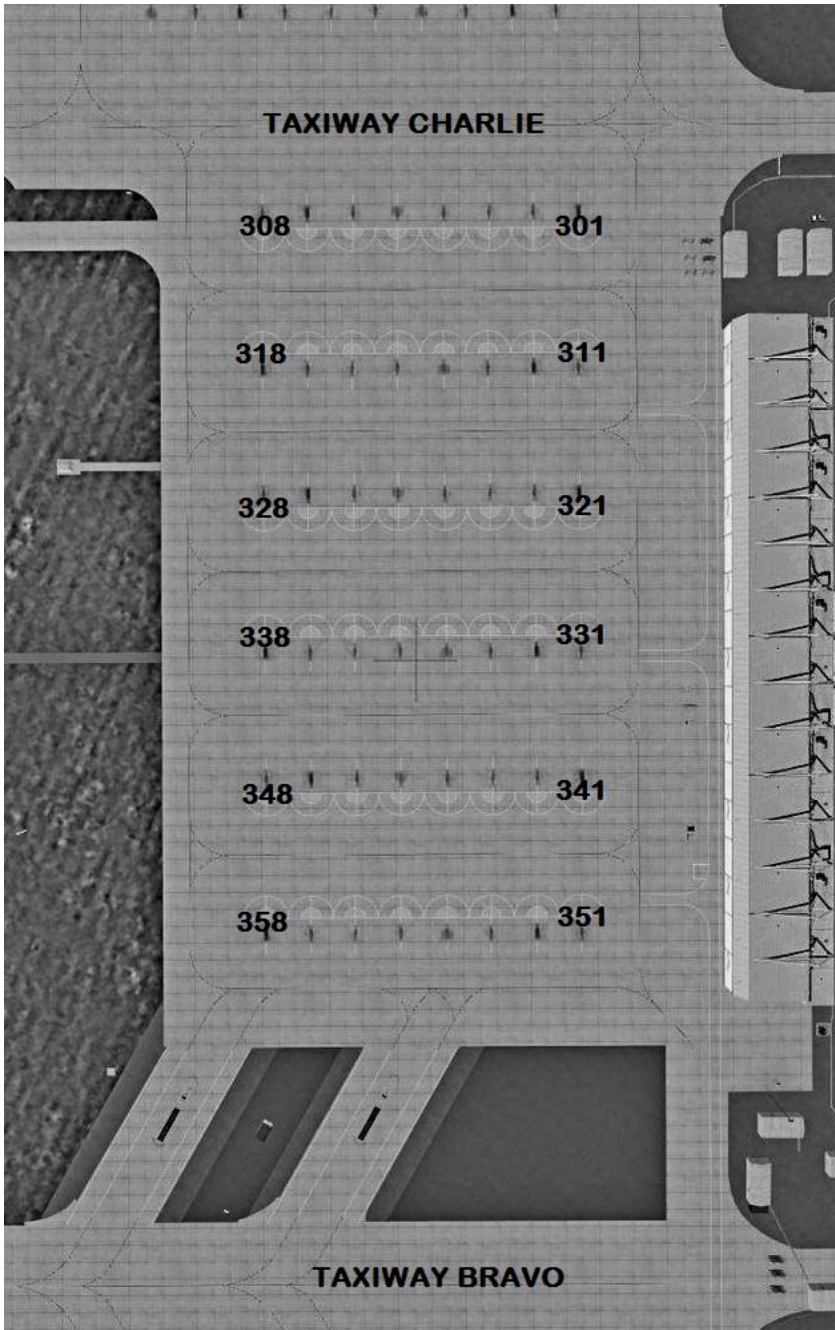
PARKING RAMP 1



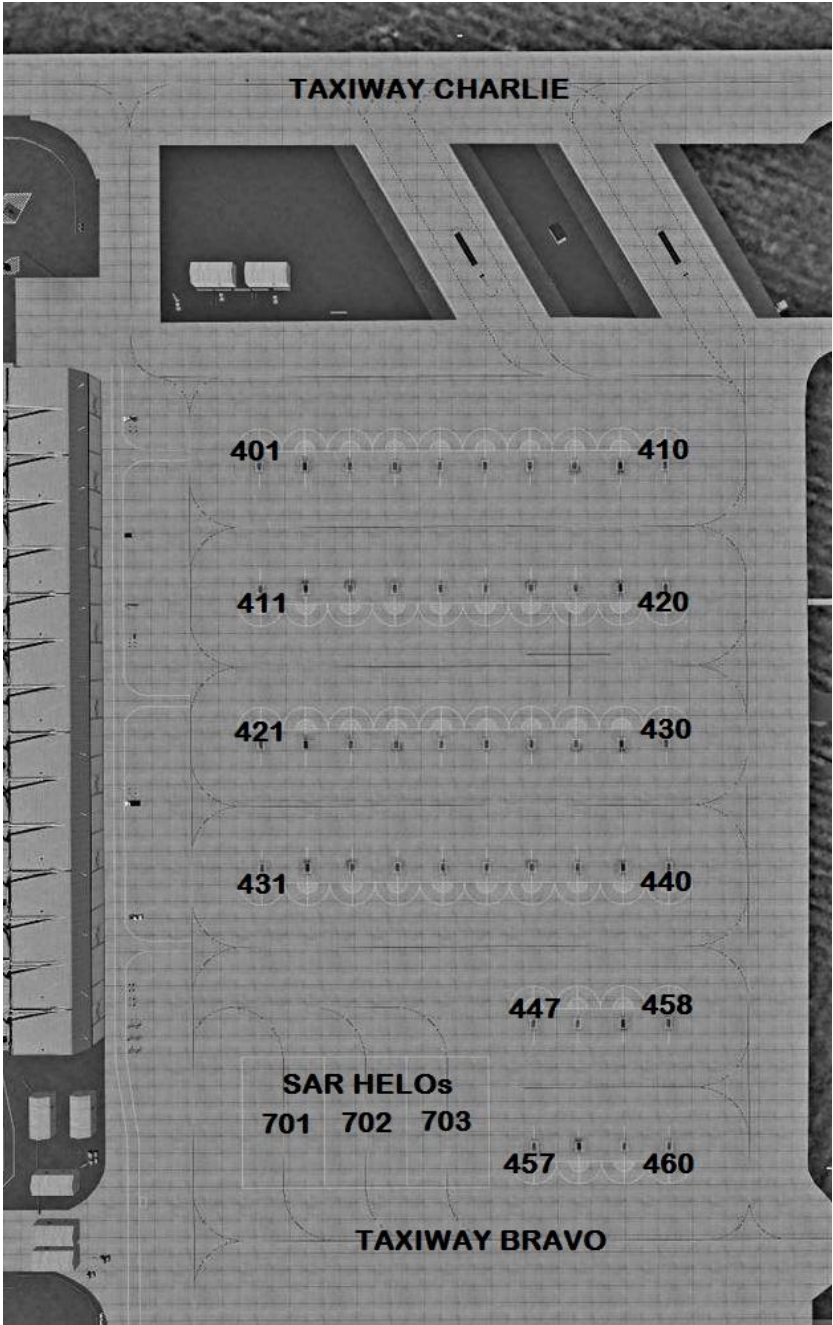
PARKING RAMP 2



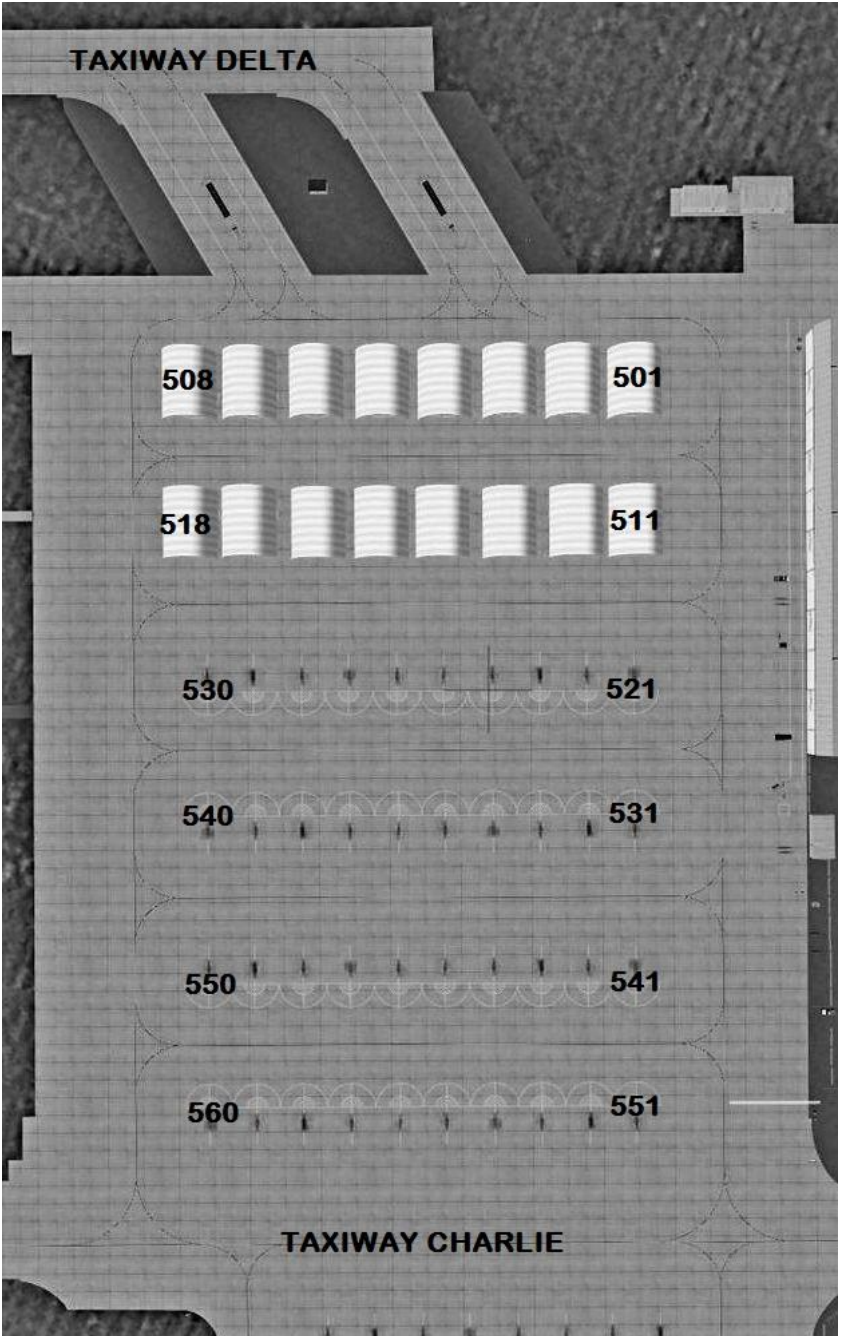
PARKING RAMP 3



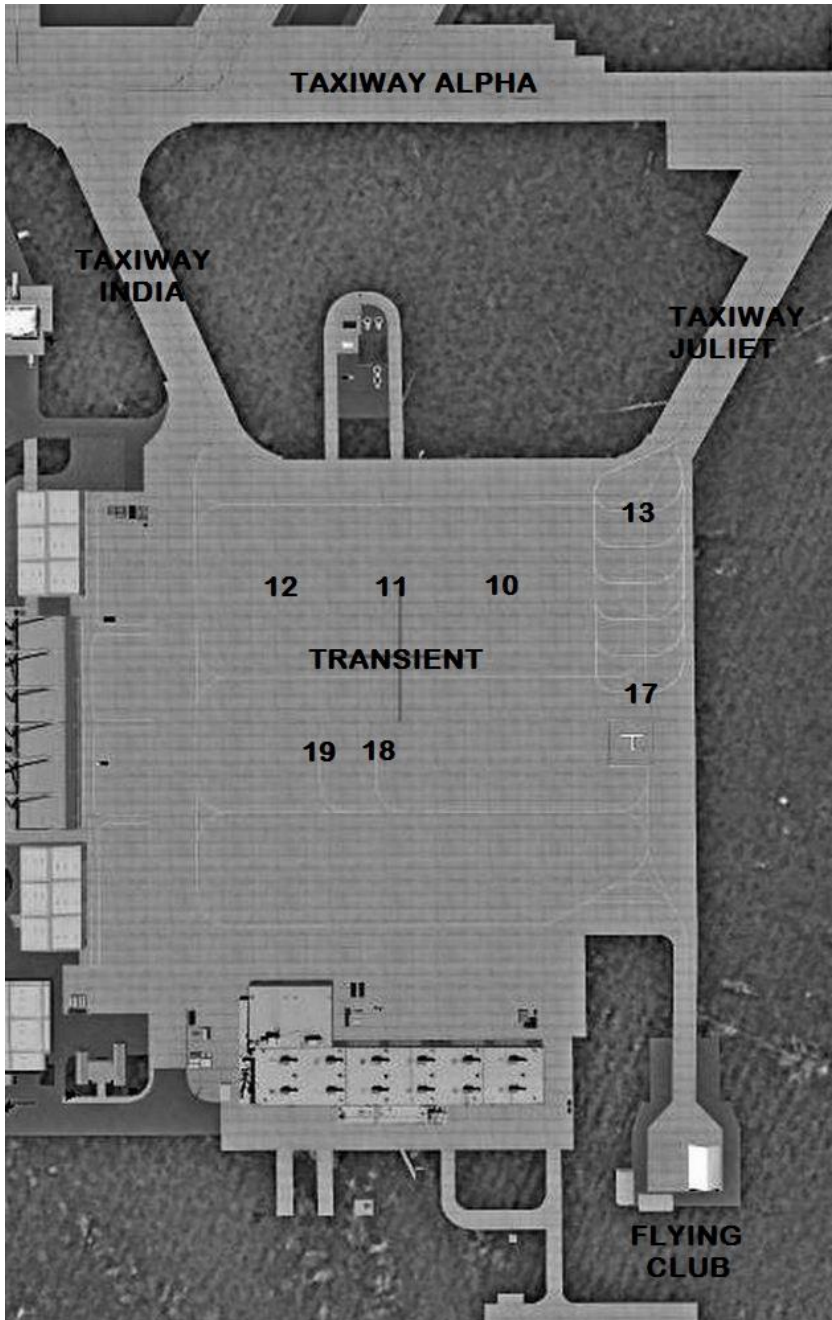
PARKING RAMP 4



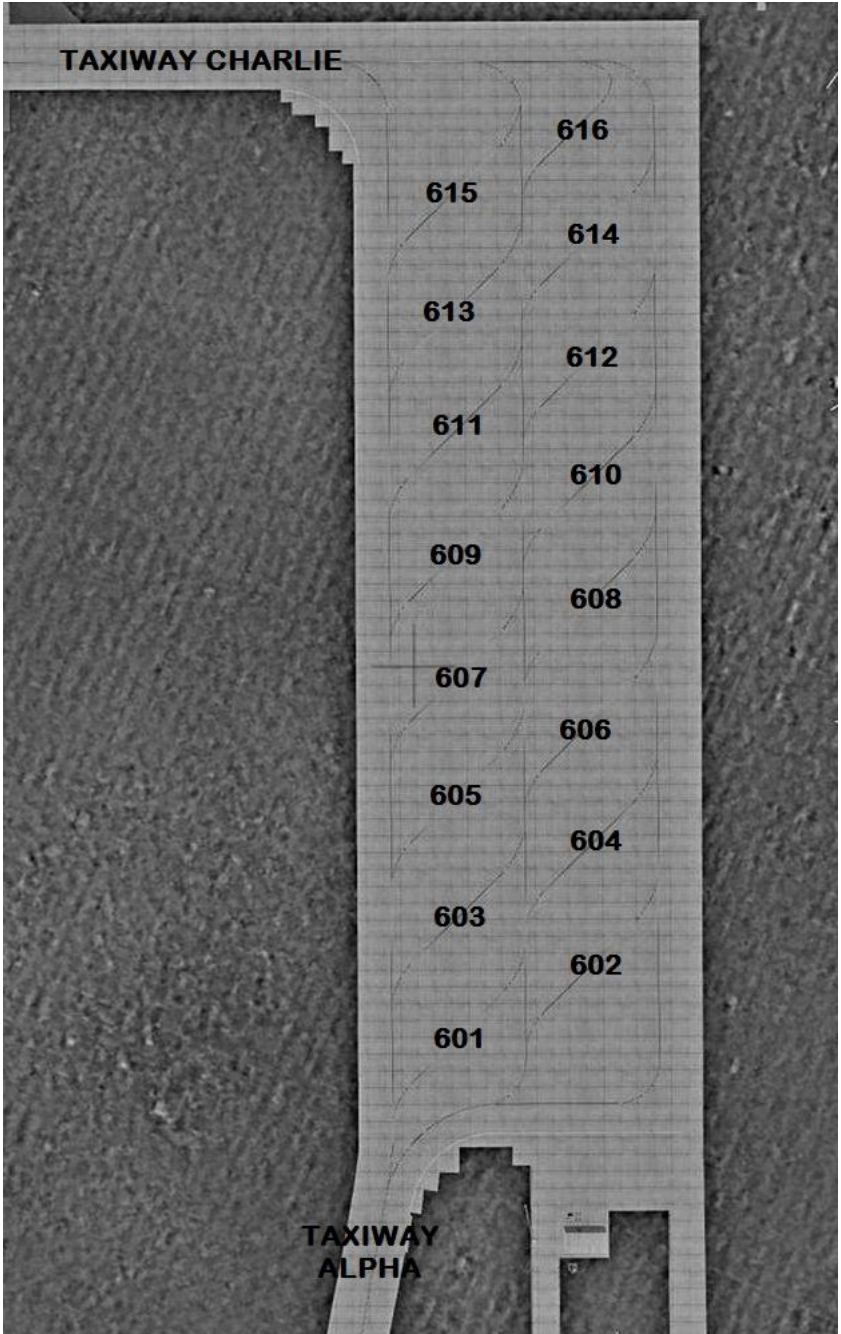
PARKING RAMP 5



PARKING ENGINE SHOP RAMP



PARKING CALA RAMP



PADDLES-SIX DEPARTURE

LEMOORE NAS (REEVES FIELD) (NLC)

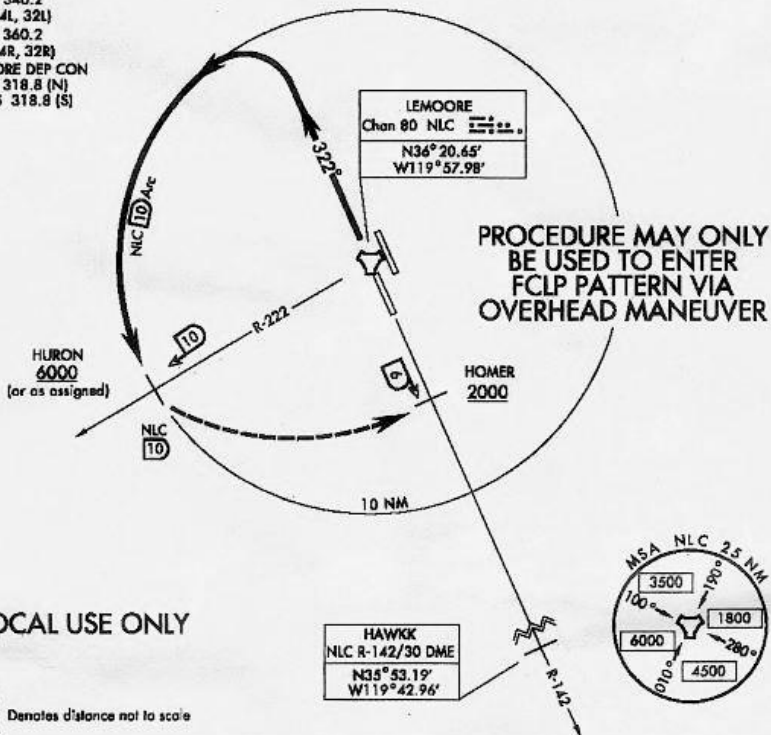
LJO-5067 [USN]

LEMOORE, CALIFORNIA

ATIS* 267.6
 CLNC DEL
 124.1 380.8
 GND CON
 121.65 305.2
 LEMOORE TOWER *
 128.3 340.2
 (Rwy 14L, 32L)
 128.3 340.2
 (Rwy 14R, 32R)
 LEMOORE DEP CON
 124.1 318.8 (N)
 118.15 318.8 (S)

Rwy	Knots	60	120	180	240	300	360
32L	V/V(fpm)	250	500	750	1000	1250	1500
32R	V/V(fpm)	260	520	780	1040	1300	1560

ATC Climb Rate
 To 6000 HURON



LOCAL USE ONLY

⚡ Denotes distance not to scale

See FLP TLA Vol 3/THA SW

DEPARTURE ROUTE DESCRIPTION

TAKE-OFF RWY 32L/R: Climb via heading 322° to join and arc W on the 10 mile arc to HURON. Maintain 6000 min alt or as assigned by ATC.

NOTE: IFR will be terminated at HURON DME Fix if VMC. VFR advisory service provided to HOMER DME fix (2000 min) or until runway in sight and pilot requests freq change to Twr.

IMC LOST COM PROCEDURE: Use CODE ALPHA (Page 8)

PADDLES-SIX DEPARTURE

LEMOORE, CALIFORNIA

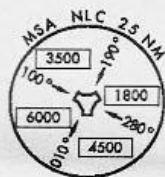
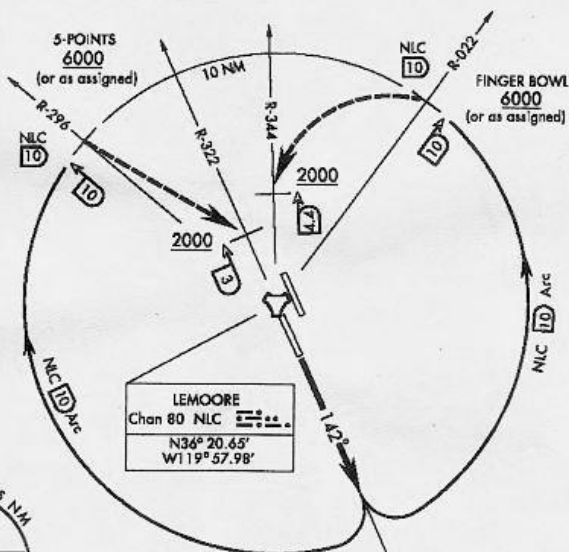
HOOKER-FOUR DEPARTURE

LUO-5067 [USN]

LEMOORE NAS (REEVES FIELD) (KNLC)

LEMOORE, CALIFORNIA

ATIS * 267.6
 CLNC DEL
 124.1 380.8
 GND CON
 121.65 305.2
 LEMOORE TOWER *
 128.3 340.2
 (Rwy 14L, 32L)
 128.3 360.2
 (Rwy 14R, 32R)
 LEMOORE DEP CON
 124.1 318.8 (N)
 118.15 318.8 (S)



**PROCEDURE MAY ONLY
 BE USED TO ENTER
 FCLP PATTERN VIA
 OVERHEAD MANEUVER**

TULAR
 NLC R-142/20 DME
 N36° 20.65'
 W119° 57.98'

LOCAL USE ONLY

⚡ Denotes distance not to scale

See FLIP TLA Vol 3/THA SW

DEPARTURE ROUTE DESCRIPTION

TAKE-OFF RWY 14L/R: Climb runway heading 142° to join and arc . . . thence

5-POINTS TRANSITION: W on the NLC TACAN 10 DME Arc to 5-POINTS (NLC R-296/10 DME) - Rwy 14R. Maintain 6000 or as assigned by ATC.

FINGER BOWL TRANSITION: E on the NLC TACAN 10 DME Arc to FINGER-BOWL (NLC R-022/10 DME) - Rwy 14L. Maintain 6000 or as assigned by ATC.

NOTE: IFR will be terminated at 5-POINTS DME fix for 14R or FINGER-BOWL DME fix for 14L if VMC. VFR advisory service provided to NLC R-322/3 DME fix (2000 min) for 14R or NLC R-344/4.4 DME fix (2000 min) for 14L or until the appropriate runway in sight and pilot requests freq change to Twr (340.2/14L or 360.2/14R.)

IMC LOST COM PROCEDURE: Use CODE BRAVO (Page 8)

HOOKER-FOUR DEPARTURE

LEMOORE, CALIFORNIA

LEMOORE NAS (REEVES FIELD) (KNLC)